

# HEATHFIELD PRIMARY SCHOOL



## Attendance Traffic Lights

95% and above

91% - 94%

90% and below

## Attendance for the whole school for the week was 92.9 %

Jellyfish AM, PM, and FT 91.9%	Turtles 90.5%	Octopus 94.4%
Hedgehogs 93.5 %	Owls 93.2%	Squirrels 90.7%
Peacocks 94.3%	Eagles 92.6%	Rabbits 91.8%
Panthers 93.4%	Pelicans 94.5 %	Falcons 92.6%
Cougars 92.1%	Pumas 93.00%	Leopards 94.3%

Let's get all our classes in the **green!**

**Reminder:** The end of term is Next Friday 28<sup>th</sup> July. School reopens to pupils on Monday 4<sup>th</sup> September as 31<sup>st</sup> August and 1<sup>st</sup> September are INSET days

END of Term! Goodbye to our fantastic Year 6 children – we wish them all the luck in the world as Year 7s – Please come back and see us so we know how you are doing!

Have a happy, safe holiday!

## What's on next week at Kersall Drive:

Monday 4 <sup>th</sup> Sept	Tuesday 5 <sup>th</sup> Sept	Wednesday 6 <sup>th</sup> Sept	Thursday 7 <sup>th</sup> Sept	Friday 8 <sup>th</sup> Sept
Back to School Turtles 08.40am til 11.40am Octopus 12.15pm til 3.15pm	Turtles 08.40am til 11.40am Octopus 12.15pm til 3.15pm	Turtles & Octopus Full Day 08.40am til 3.15pm		

## What's Been Happening in School:

<b>Year 1 &amp; 2</b>	Thank you to all of the children, parents and carers for a fantastic year in Key Stage 1. We have learned so much, laughed so much and loved every minute. Our children have enjoyed learning about the Great Fire of London, explored the Arctic and Antarctica, marched through Nottingham and even recalled the history of Fairy Tales – phew! What a busy year we have had! We would like to say a huge thank you for all of your support. Good luck to our brilliant year 2 children as they move into Key Stage 2. Have a fantastic summer break and we will see you soon!
<b>Year 3 &amp; 4</b>	Well done and thank you for a fabulous year! Year 3 and 4, you have been AMAZING. We have had a lovely week finishing off work and getting ready for our new classes. Earlier in the week we each made our own windmills using cardboard and wood which we had to saw. Following this, we have written instructions about how to make the windmill, being sure to use the features we have been practising throughout the year. A huge good luck to the year 4s who will become year 5s, we will miss you! Have a wonderful summer everybody!
<b>Year 5 &amp; 6</b>	What an amazing year it has been in Year 5 and 6. It has been fantastic! We have been getting the children ready for the year 6 leavers assembly, which went amazing on Friday and gave out lots of awards to the children. Year 6 also really enjoyed their party on Wednesday which went on until 8pm. What a busy week the year 6's have had. We have finished our RSE lessons this week in both year 5 and 6. In PE, have improved our basketball skills and enjoyed some games of rounders. What a fabulous week it has been! Well done Year 5 and 6. Enjoy the summer holidays!

## Year 3 and 4 Welcome Meeting

For children who will be in Year 3 and 4 next academic year, there will be a welcome meeting in the school hall on **Thursday 7<sup>th</sup> September** at 3.15pm. Pop the date in your diary now!



**Breakfast and After School Club change of Name:** To make sure that Breakfast and After School Club are seen as one organization, we will be renaming our before and after school care 'Lighthouse Club' from September. We've even got a snazzy new logo! Click on the QR code for booking forms which is now live.

## **School Uniform going online**

From the start of the new academic year, school will be reducing our stock of uniform. Once an item/size is no longer in stock in school, it will be removed from the School Gateway app. All items will be available to purchase direct from the supplier - [Just School Wear](#). The supplier is currently in the process of adding the Heathfield page to their website - as soon as this is complete we will let you know.

We will continue to provide water bottles at £1.50 each, and we will also provide the first book bag for free - additional book bags will be available to purchase from the supplier.

**Yr. 5&6 Walking home alone:** At Heathfield we give parents/carers of children, in Year 5 & 6, the option to let their children walk home alone at the end of the school day, without younger siblings.

Please follow the link and complete the form to give consent <https://forms.office.com/e/Fh86xacjrg>

**Summer Rainbow Reading Challenge:** We LOVE reading and want all children to carry on with all of their hard work by continuing to read regularly over the summer holidays. Our Heathfield Summer Rainbow Reading Challenge card needs filling up with titles of books that your child reads over the summer – please sign each box. Full cards on return to school will be rewarded! Find FREE e-books on [Rainbow Reading Challenge | Heathfield \(heathfieldprimary.org.uk\)](https://rainbowreadingchallenge.heathfieldprimary.org.uk)

## **Online Safety: Is your child safe online or on their phone? Do you check?**

With the long holidays coming up we urge you to ensure you have internet and social media safety on your mind. Tablets and phones may keep your child busy for a while, but your child may be at risk from cyber bullying, grooming or online abuse. Please keep your child safe at home. Remember many apps have age ratings of 13+ and anyone can see anything which is posted. Follow this link to sign up to a FREE useful newsletter: [Parent Guides | Skips Safety Net \(skipseducational.org\)](https://skipseducational.org/)



**Imagination Library** – Please follow this link to sign up for FREE books for 0-4 year olds through the Dolly Parton Imagination Library scheme. [Free Books | Dolly Parton's Imagination Library | Nottingham | SSBC \(smallstepsbigchanges.org.uk\)](https://smallstepsbigchanges.org.uk/)

### **Music at Heathfield from September 2023**

At Heathfield we are proud to be able to offer children the chance to continue learning musical instruments for free in year 5 and 6. From September we will be offering follow on tuition with the instruments that they have learnt in year 4 (violin, viola and cello). Or guitar lessons.

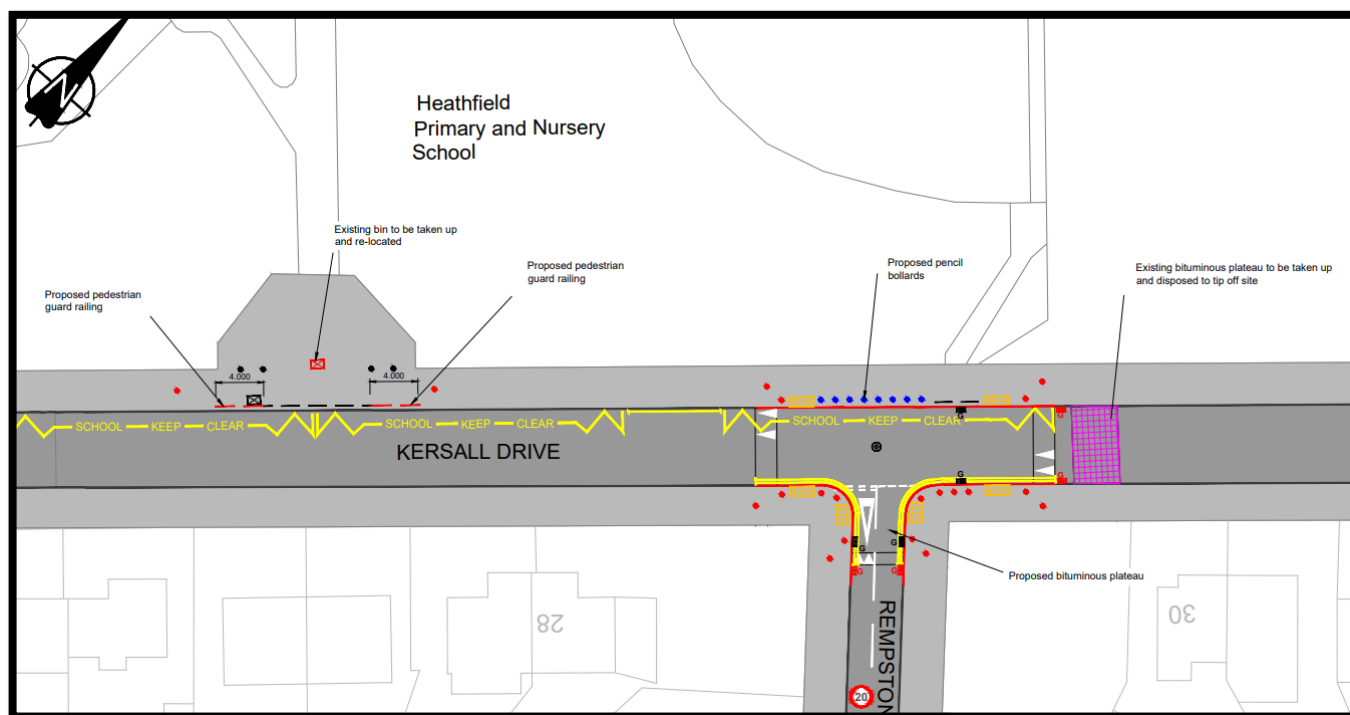
At Kersall Drive, guitar lessons will take place on Wednesdays from 3:15 – 4:15. Your child would be part of a 20 minute group lesson with the rest of the hour being used to practise. They would not leave until 4:15 as we do believe that practise is valuable. The strings lessons will take place on Thursday from 3:15 – 4:15. Again with a 20 minute group lesson with the rest of the hour being used to practise.

In addition, there will be the opportunity for children to take part in Area Band – a weekly strings practise group that comes together with musical ensembles from other schools for half-termly practices and termly concerts.

Please fill out this form <https://forms.office.com/e/mWghnxNmW8> to indicate if your child would like to continue learning an instrument. There is no guarantee that they would get the position, as it will be based on a first come, first served basis.

As we anticipate demand to be high, if children miss more than two lessons a term, their spot would be given to another child on the waiting list.

**Road Safety Measures on Kersall Drive:** In response to a number of concerns from parents and our community over recent years, which we shared with local councilors and the city council, there are going to be some road improvements to Kersall Drive. These measures are to improve the visibility for our children to cross the road safely and to ensure our entrances are better protected. Kersall Drive will be closed to through traffic over the summer holidays for the work to take place.



## Community News:

**Nottingham Summer Reading Challenge.** Every summer, our City Libraries invite local children to take part in a reading challenge which maintains their interest in reading during the holidays. This year's challenge, Ready Set Read, is themed around the power of play, sport, games and physical activity. Children can take part by signing up any time at their local library and collecting free materials as they keep reading. Children can take part in the library – it's free and all children need is a library card. If they don't have one they can sign up at their local library. Once they have read six books, they will receive a certificate and an invite to a medal ceremony where they will be presented with their very own Summer Reading Challenge medal. **Bring the medal into school and get some free stamps on your Rainbow Reading Card!**



**Free Outdoor Play sessions:** Register with the Toy Library and your child can access a range of afterschool activities during term time: <https://app.upshot.org.uk/signup/4367e36c/embed/>

- **Monday 3.30 - 5.30pm Brooklyn Park, next to Highbury Vale Community Centre, Brooklyn Road, off Kersall Drive, Highbury Vale, NG6 9ES**
- **Tuesday 3.30 - 5.30pm Southglade Park, Southglade Road, Bestwood, NG5 5GU**
- **Wednesday 3.30 - 5.30pm Vernon Park, Vernon Road Entrance, Basford, NG6 0AF**

**Free Summer Activities just click on the link below.**

<https://nottinghamplayhouse.co.uk/free-summer-arts>



## Summer 2023 events at Green's Windmill

### Games Day – Various Dates

**Dates:** 4th, 11th, 18th & 25th August 2023

**Time:** 10am – 4pm

**Price:** This is a **free event** but donations are welcome

Join us this summer for games at the mill! Can you knock down all the skittles, construct the soma cube or beat the windmill buzzer? There will be giant connect 4, giant snakes and ladders, and ping-pong to name a few more! Plus, the bubble machine will be in action, it's always a winner!

Games for all ages and there's no need to book, just turn up. Games will be in the millyard and community garden. The science centre and windmill will be open as usual too.

SAFEGUARDING OUT OF HOURS

ARE YOU WORRIED ABOUT A CHILD?

IF SCHOOL IS NOT OPEN WHO CAN YOU SPEAK TO?

Police 999 or 101

If you believe that a child is at immediate risk and in need of protection then you should call the Police: 999 immediately.

Alternatively, if you feel the child is a risk of abuse or neglect, but not in immediate need of protection, you should call the Police on 101.

Nottingham City Children's Social Care 0115 8764800

If you make the decision to contact Children's Social Care please call 0115 876 4800 or e-mail [csosdirect@nottinghamcity.gov.uk](mailto:csosdirect@nottinghamcity.gov.uk)

**Talk to the NSPCC**

For advice and support about a child, or to report a concern, talk to us. It's free and you don't have to say who you are.

**0808 800 5000**

[help.nspcc.org.uk](https://help.nspcc.org.uk) [nspcc.org.uk/helpline](https://nspcc.org.uk/helpline)

EVERY CHILDHOOD IS WORTH FIGHTING FOR

School out of hours email: [safeguarding@heathfield.nottingham.sch.uk](mailto:safeguarding@heathfield.nottingham.sch.uk)

# School Holidays Free Fun, Food & Play

We deliver free play sessions for children aged 5-13 during most school holidays, these are different to our usual play sessions as we require a completed booking form as we have limited places available.

Families with children who are eligible for school meals are given priority, on a low income or have special educational needs

We have forthcoming summer holiday play schemes taking place across several areas of Nottingham City in 2023 - see the image below for our Summer 2023 programme.

Bookings are via the holiday activities website and you use your e-voucher that should be sent from your child's school to book a place. We also require a completed Toy Library Play Membership form for each child before we can confirm their place, complete this online here:

<https://app.upshot.org.uk/signup/4367e36c/embed/>



## FREE FUN, FOOD & PLAY



**THE TOY LIBRARY**  
Because we all need to play

### SUMMER HOLIDAYS 2023

<b>BASFORD PLAY</b>	Queensberry Church Hall Queensberry St Basford, NG6 0DG	9th, 16th, 23rd August 10am - 1pm	<p><b>BOOKING IS REQUIRED</b></p> <p><small>We aim to be inclusive of all children's needs please contact us to discuss</small></p>    
<b>BESTWOOD PLAY</b>	The Scout Hut Edwards Lane, NG5 6EP	8th, 15th, 22nd August 11am - 2pm	
<b>BILBOROUGH PLAY</b>	Birchover Community Centre, Bilborough NG8 4BW	4th, 11th, 18th August 11am - 2pm	
<b>BULWELL PLAY</b>	Barkers Wood next to Bulwell Hall Park NG6 8GG	9th, 16th, 30th August 11am - 2pm	
<b>EDWARDS LANE PLAY</b>	The Scout Hut Edwards Lane, NG5 6EP	10th, 17th, 24th August 11am - 2pm	
<b>HIGHBURY VALE PLAY</b>	Queensberry Church Hall, Queensberry St Basford, NG6 0DG	9th, 16th, 23rd August 2pm - 5pm	
<b>MEADOWS PLAY</b>	Queens Walk Pavilion & Rec, Meadows NG2 2DF	1st, 22nd, 29th August 11am - 2pm	
<b>NEW BASFORD PLAY</b>	Gawthorne St Park New Basford, NG7 7JS	7th, 14th, 21st August 11am - 2pm	
<b>RADFORD PLAY</b>	Primary, Seely Rd Radford NG7 1NU	21st, 22nd, 23rd August 11am - 2pm	

**For young people aged 5-13 years, from school year 1**  
ADVENTUROUS INDOOR & OUTDOOR PLAY, FUN, CRAFTS & SPORTS WITH PACKED LUNCH & TAKE HOME RECIPE KIT

Priority given to children in receipt of free school meals. To book your local scheme please use your holiday voucher emailed via school & visit [holidayactivities.com](http://holidayactivities.com)  
A completed Toy Library membership is required to confirm your booking

**0115 9753898**  
find us on Facebook  
[www.toy-library.co.uk](http://www.toy-library.co.uk)

These play sessions are 3 hours long and children get a packed lunch and a recipe kit food bag to take home for the family.

Any changes to these times will be published on our Facebook page. Please contact us on 0115 9753898 if you have any queries or require further information.

We hope to see you soon.

**Nottingham Riverside Festival.** The Riverside Festival, which will be back as it has been for the last 40 years at the Victoria Embankment from Friday 4 to Sunday 6 August 2023. The biggest free festival in the East Midlands is expected to welcome 150,000 visitors alongside the River Trent over the weekend, offering a wide range of entertainment and activities for all ages. A mile-long stretch of fairground rides, games and attractions will be situated along the banks of the Trent, plus numerous street food vendors, bars and market stalls. River-based activities including Dragon Boat Racing will return, which raises thousands of pounds for charities over the years. Music has always been at the heart of Riverside Festival, and this year is no different with a variety of solo artists, bands and musicians performing across three stages. Of course, one of the most popular elements of the festival is the firework display above the river, which takes place on both Friday and Saturday night at 10.30pm

**Nottingham Beach to Return to the Market Square:** Nottingham Beach will be back at Old Market Square this summer, bringing the seaside to the city from Tuesday 25 July - Sunday 3 September 2023. Entry is still free for visitors wanting to enjoy the beach and paddling area. You can book in advance for the Giant Slip 'n Slide, featuring 55m waterslide The Arrow, and Little John, a huge 6 lane waterpark. Tickets for hourly slots are priced at £12.50 per person, and £10.50 for Nottingham city residents (tickets must be booked online to get the resident discount code) – [book tickets here](#). There will also be other rides and attractions including bungee trampolines and hook a duck, as well as food and drink stalls and the Beach Bar.



## Bulwell Group Timetable

### MONDAYS

#### Story & Rhyme Time

10am-11am

Room to Play

#### Buggy Push

First Monday of the month

1:30pm-2:30pm

Book your place



### TUESDAYS

#### Baby Play

(Newborn to confident walkers)

10am-11.30am

Room to Play

#### Twigglets

12.30pm-2.30pm

Barkers Wood

Book: [www.bit.ly/twigglets](http://www.bit.ly/twigglets)



### WEDNESDAYS

#### Busy Bodies

1pm-2pm

Snapewood Community Centre

### THURSDAYS

#### Messy Play

1pm-2pm

Bulwell Healthy Living Centre

### FRIDAYS

#### Cook & Play

10am-12noon

Bulwell Healthy Living Centre

Limited places available

Book your place

### Baby Massage

(Various days and locations)

Sessions are reserved for families living in Bulwell with a baby under 26 weeks old

Call 07825 233 729 for details



### "Did you know..."

...we also offer free speech and language support for 0-4 year olds?

For more information, visit [www.bit.ly/Speech-lang-comms](http://www.bit.ly/Speech-lang-comms) or call 07920 138129



Please pre-book your place for Buggy Push, Cook & Play and Baby Massage.

There is currently no need to book for other groups. ☎ 0115 975 3898

JULY 2023						
M		3	10	17	24	31
T		4	11	18	25	
W		5	12	19	26	
T		6	13	20	27	
F		7	14	21	28	
S	1	8	15	22	29	
S	2	9	16	23	30	

**Heathfield Primary School**  
**School Terms and Holidays Calendar - 2023/24**

Please note - 2 INSET days still to be confirmed

AUGUST 2023						
M		7	14	21	28	
T	1	8	15	22	29	
W	2	9	16	23	30	
T	3	10	17	24	31	
F	4	11	18	25		
S	5	12	19	26		
S	6	13	20	27		

SEPTEMBER 2023						
M		4	11	18	25	
T		5	12	19	26	
W		6	13	20	27	
T		7	14	21	28	
F	1	8	15	22	29	
S	2	9	16	23	30	
S	3	10	17	24		

OCTOBER 2023						
M		2	9	16	23	30
T		3	10	17	24	31
W		4	11	18	25	
T		5	12	19	26	
F		6	13	20	27	
S		7	14	21	28	
S	1	8	15	22	29	

NOVEMBER 2023						
M		6	13	20	27	
T		7	14	21	28	
W	1	8	15	22	29	
T	2	9	16	23	30	
F	3	10	17	24		
S	4	11	18	25		
S	5	12	19	26		

DECEMBER 2023						
M		4	11	18	25	
T		5	12	19	26	
W		6	13	20	27	
T		7	14	21	28	
F	1	8	15	22	29	
S	2	9	16	23	30	
S	3	10	17	24	31	

JANUARY 2024						
M		1	8	15	22	29
T		2	9	16	23	30
W		3	10	17	24	31
T		4	11	18	25	
F		5	12	19	26	
S		6	13	20	27	
S		7	14	21	28	

FEBRUARY 2024						
M		5	12	19	26	
T		6	13	20	27	
W		7	14	21	28	
T	1	8	15	22	29	
F	2	9	16	23		
S	3	10	17	24		
S	4	11	18	25		

MARCH 2024						
M		4	11	18	25	
T		5	12	19	26	
W		6	13	20	27	
T		7	14	21	28	
F	1	8	15	22	29	
S	2	9	16	23	30	
S	3	10	17	24	31	

APRIL 2024						
M		1	8	15	22	29
T		2	9	16	23	30
W		3	10	17	24	
T		4	11	18	25	
F		5	12	19	26	
S		6	13	20	27	
S		7	14	21	28	

MAY 2024						
M		6	13	20	27	
T		7	14	21	28	
W	1	8	15	22	29	
T	2	9	16	23	30	
F	3	10	17	24	31	
S	4	11	18	25		
S	5	12	19	26		

JUNE 2024						
M		3	10	17	24	
T		4	11	18	25	
W		5	12	19	26	
T		6	13	20	27	
F		7	14	21	28	
S	1	8	15	22	29	
S	2	9	16	23	30	

JULY 2024						
M		1	8	15	22	29
T		2	9	16	23	30
W		3	10	17	24	31
T		4	11	18	25	
F		5	12	19	26	
S		6	13	20	27	
S		7	14	21	28	

KEY	
	In school
	School holiday
	Public holiday
	In service training day

Half term 1 - 7 weeks 2 days  
 Half term 2 - 6 weeks 3 days  
 Half term 3 - 5 weeks 2 days  
 Half term 4 - 5 weeks 4 days  
 Half term 5 - 5 weeks and 4 days  
 Half term 6 - 8 weeks

## Nottingham City Council Autism Team Parents/Carers Newsletter

This is your termly newsletter about all things related to Autism.  
Thoughts, articles, activities, quotes and more!

### Upcoming Events

#### Coffee Meetings

Tuesday 29<sup>th</sup> June 1 – 2.30pm

Location TBC

Thursday 13<sup>th</sup> July 6.30 – 8pm on Microsoft Teams

Scan the QR code to join or click the link

[Parent's coffee meeting online](#)

#### Workshops

##### AET Making Sense of Autism

Wednesday 7<sup>th</sup> June

6.30 – 8pm on Microsoft Teams

Scan the QR code to join or click the link

[Making Sense of Autism for Parents](#)

##### How the SEN system works in Nottingham City

Thursday 6<sup>th</sup> July

10 – 11.30am on Microsoft Teams

Scan the QR code to join or click the link

[How the SEN system works in Nottingham City](#)



Parents' Meeting online



Making Sense of Autism



How the SEN system works in Nottingham City



Autistic Nottingham are founded and run by Autistic adults without intellectual disabilities. They aim to bridge the gap in provision for Autistic adults, who often find no appropriate services for their needs.

Find out more information about their service on their website:

<https://autisticnottingham.org/>

The Award-Winning Autism Friendly Spectrum festival is back. On the 16th September 2023, at Lea Green Learning & Development Centre, near Matlock, Derbyshire, they will be hosting their inclusive, family friendly event for the 5th year running, if you ignore lockdown... The event allows people with Autism and other disabilities to have fun in an environment where they can truly be themselves, whilst providing parents and carers a space to relax, without fear of judgement.

See website for details:

<https://www.spectrumautismfestival.co.uk/>



### We need you!

The Autism Team would like your feedback.

We want to hold our coffee meetings in different areas of the city, in accessible and relaxed settings.

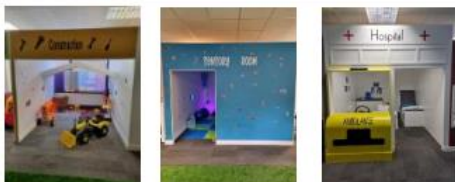


Do you know of anywhere suitable, ideally near a tram or bus route?

Email us at

[anita.bennett@nottinghamcity.gov.uk](mailto:anita.bennett@nottinghamcity.gov.uk)

with suggestions



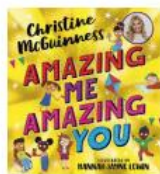
My Little World Roleplay is a role-play experience for children of all abilities.

There will be some quieter, fully inclusive SEN sessions – see website for details.

See website for more details

<https://www.mylittleworldroleplay.co.uk/sen>

### QUOTE CORNER



"Autistic and proud. I have felt different my whole life, honestly, I am relieved to finally understand myself!"

Christine McGuinness



## Our Safeguarding Team



### Designated Safeguarding Lead (DSL):

Miss Dickens



Co-Headteacher

### DSL Deputies:

Mr Hicks



Co-Headteacher

Mrs Abasspour



Deputy Head  
Inclusion

Mr Battison



Deputy Head  
Pastoral Support

Mr Padley



Deputy Head  
Teaching & Learning

Mrs Baker



Learning Mentor  
(Mon, Thur, Fri)

Miss Parmiter



Learning Mentor  
(Mon, Tues, Wed)

Mrs Dyer



Safeguarding  
Officer

Miss Papp



Learning Mentor

Link Governors: Pete Cumberland, Clair Taylor

Family Support Worker: Amber Green (Tues/Wed/Thurs)

At least one member of the DSL team is available at all times during the school day if you are concerned about a child.



We use MyConcern for our reporting and record keeping. This can be accessed out of school hours to report a concern to a DSL.

Out of Hours & referrals:

Nottingham City Council Children and Families Direct 0115 876 4800

# AEM

Autism East Midlands

Nottingham City Family Support Hub

Session dates for 2023

45th Scout Group

Edwards Lane

Nottingham, NG5 5SL

The aim of the hub is to offer support and a safe space for families who have children on the Autistic Spectrum. These are drop in sessions for the whole family to enjoy, aimed at children under 11 years of age. Children (including siblings) can participate at their own pace with support from parents and our staff team. Families can engage in activities or sit back and enjoy some refreshments, whilst talking to other families and sharing experiences or speaking with staff for advice and support.

No need to book a place – just turn up – but feel free to contact me if you have any questions - Hannah.Weir@aem.org.uk

Usually the 3<sup>rd</sup> Wednesday of the month, 4.30-6.30pm

January 18<sup>th</sup>

February 15<sup>th</sup>

March 15<sup>th</sup>

April 19<sup>th</sup>

May 17<sup>th</sup>

June 21<sup>st</sup>

July 19<sup>th</sup>

August 16<sup>th</sup>

September 20<sup>th</sup>

October 18<sup>th</sup>

November 15<sup>th</sup>

December event TBC

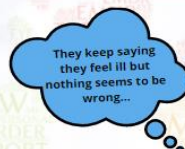


For further information contact:- Hannah.Weir@aem.org.uk



## MENTAL HEALTH SUPPORT TEAM (MHST)

Are you concerned about your child?  
Do they seem worried, tired, irritable, upset?  
Are they struggling with friendships, anxious or withdrawn?



MHST offer 1:1 and group support to help you learn new ways to support your child to deal with difficult emotions.

For example, how to help your child with fears and worries or help with behavioural difficulties.



If you would like support scan here ->



Or you can speak to .....In school



Free places for children in receipt of benefit related free school meals

## Westdale Holiday club

running at Hayward Road Community Centre, Mapperley

Monday to Thursday from 31st July to 24th August

Open to all children aged 3 to 11 years

Activities include dodgeball, dance, drama, yoga, multi skills, ball games, art and crafts, team and confidence building activities and much more.



Cost: £22 per day

All childcare vouchers accepted

Timings: 8am-5pm

To find out more or to book visit  
[www.rattleandrollperformance.com](http://www.rattleandrollperformance.com)  
or call 07722 014301

